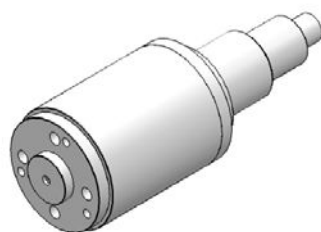


High Power Fiber In & Free Space Out Isolator, PH(M)OI



PH(M)OI

Description

The high power isolator series includes in-line type, beam expanded isolator, fiber in and free space out isolator and free space isolator etc. they're characterized with low insertion loss, high isolation, high power handling, high return loss, excellent environmental stability and reliability. They are ideal for fiber laser and instrumentation applications.

Feature

High isolation and low insertion loss
 PM and Non-PM are available
 Excellent environmental stability and reliability
 Fiber can be customized

Application

Fiber Laser;
 Fiber Sensor

Specification

Type Parameter	High power fiber in & free space out isolator, PH(M)OI	
	Non-PM isolator	PM
Operating wavelength(nm)	1064±5	
Peak isolation (dB)	≥35	
Isolation in band at 23℃(dB)	≥28	
Insertion loss at 23℃(dB)	≤0.5	
Polarization dependent loss (dB)	≤0.15	
Extinction ratio (dB)	/	≥18(Type B), ≥20(Type F)
Return loss (Input) (dB)	≥50	
Fiber type (can be customized)	HI1060, x/125, x/250, etc. (x=10um, 15um, 20um, 30um, etc.)	PM980, PM x/125, x/250, etc. (x=10um, 15um, 20um, 30um, etc.)

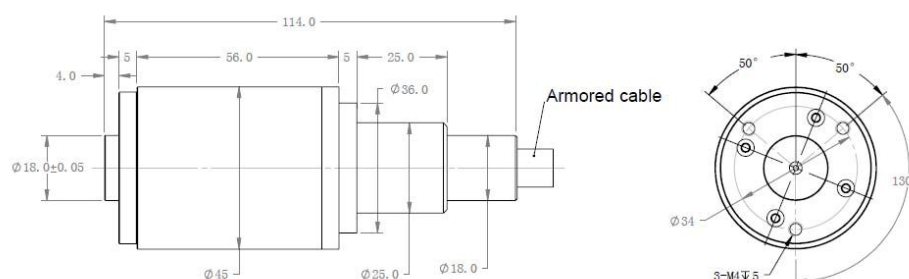
Armored cable diameter		Φ10.5mm cable, can be customized.
Output beam diameter (mm)		0.4-0.6; Others on demand
Power handling	Average (W)	10, 20, higher on demand
	Pulse peak(KW)	10, 20, higher on demand
Backward Power handling		4W for 5 Minutes or 10W for 5 Minutes or on demand
Dimensions (Φ x L mm)		Φ45xL114

* Both Single cladding fiber (SCF) and double cladding fiber (DCF) are available..

* Type B: Both axis working, Type F: Fast axis blocked.

* Power Handling total power=Forward power+ Backward power

Package Dimensions



Ordering information

PH(M)OI-XXXX-X-X-X-X-XX*XX-X-X

